

POSTGRADUATE
2019-2020



**University
of Suffolk**

A close-up photograph of human skin, showing fine hairs and freckles. The lighting is soft, creating a warm, golden-brown tone. The skin texture is visible, with some areas appearing slightly more illuminated than others.

“DO I DARE
DISTURB
THE
UNIVERSE?”

T.S. Eliot



Welcome

I am delighted that you are considering further study at the University of Suffolk. I hope that you enjoy reading this prospectus and join us for the next stage of your development.

We are a transformational university, absorbing the best traditions in higher education and aligning them with a twenty-first century audience and a modern world of employment and entrepreneurship.

Our growing numbers and high graduate employability demonstrate that we are a real force in the higher education sector. I am proud to lead this University, which puts students at the centre of its thinking. Here you are part of a community that will always strive to go further and help you achieve more.

Here you will become part of a growing postgraduate and research community that is increasingly making an impact on a changing world – a place where research, enterprise, innovation and scholarship are flourishing in many areas. Joining forces with employers, businesses, and research organisations, we offer a diverse range of opportunities and progression options, whether you are looking to use postgraduate study as a platform to a specialist role or industry, or if you are looking to progress in your existing career.

Gaining the knowledge you need to succeed is just the start. Here you will receive an exceptional education, richer and more rounded than many, and acquire skills and insights that will always be relevant, no matter how things change further down the road. Wherever you want to go in life, we will help you get there. We know you are one of a kind and we are here to help you make the most of your time.

In a world where nothing stays the same, we need to change, evolve and succeed. That's what we do. Why not join us?

Professor Helen Langton
Vice-Chancellor

CONTENTS

4	Destination Suffolk
6	Our location
8	Why choose postgraduate study
11	The Suffolk learning experience
12	Research
14	Enterprise and innovation
16	Facilities and resources
17	Learning services
18	Student services
20	Student life
21	Accommodation
22	Academic schools
26	Graduate school
28	PhD study
29	Studying at Suffolk
32	Courses
52	Business engagement and professional studies
54	Apprenticeships
56	How to apply
58	Financing your study
60	Infozone
61	Open events
62	Index

DESTINATION SUFFOLK

4

Fancy a drink?

Award-winning UK brewer Adnams and cider producer Aspall are both located in the county. Why not try a hand-crafted beer from microbrewery Briarbank in Ipswich or a local Calvors ale? There are plenty to choose from. We even have our own craft beer, Suffolk Graduate, brewed by Calvors.

Take in the view

Some of East Anglia's most stunning scenery can be found in Suffolk. The breathtaking Suffolk landscape was inspiration for famous artists Constable and Gainsborough.

Home away from home

Known for its hospitable and friendly nature, Suffolk has a growing student community and provides a mixture of dynamic urban centres, coastal resorts, and historic market towns. Come and explore the beautiful surroundings of this exciting county.



Suffolk offers a rich and diverse cultural life, with bustling towns, thriving bars, restaurants and cafés, and an extensive arts scene. It is a county steeped in history, with beautiful scenery, world famous beaches and a glorious coastline, all within easy reach of London.

Students who come to study in Suffolk will find an exciting county that sees things a little differently; proud of its heritage, Suffolk is embracing its strategic location and burgeoning technology connections, evolving into one of the most desirable places to live and work in the UK.

Visit uos.ac.uk/location



@uniofsuffolk



@UniofSuffolk



/UniofSuffolk



A county of festivals

Suffolk is home to numerous arts, literary and music festivals including Latitude Festival, Aldeburgh Festival, Pulse, Ip-Art, SPILL, and Bury Festival; many of which are fast becoming renowned highlights in the UK festival calendar.

www.visitsuffolk.com/festivals

Photograph by: Jen O'Neill

Destination
Suffolk

Well connected

Suffolk is a developing county, benefiting from the developing technologies and the growing tech cluster businesses. Multinational companies such as AXA, BT, and Willis Towers Watson have made their base here, charmed by the location and accessibility of the county to London, Cambridge and beyond.



Visit Jimmy's Farm

Honorary Doctorate Jimmy Doherty hosts his annual Jimmy's Festival at his farm, just outside Ipswich. Combining good food and live music acts, featuring the BBC Introducing stage, it's the perfect highlight of the summer.

www.jimmysfestival.co.uk



Discover new music

There is a thriving music scene throughout the county. See new bands playing in smaller venues, as well as tours from larger acts. A popular destination for music lovers is our student bar, Cult, with live music every Friday.

www.cultcafe.co.uk



Secret celebrity enclave

The Suffolk coast is a popular weekend escape for famous faces wanting to get away from it all. Stephen Fry, Dame Judy Dench, Gary Lineker, and Michael Palin are all fans of Southwold, located on the Suffolk coast.



Our very own Honorary Decorate Ed Sheeran

Raised in Suffolk, Ed's hit single 'Castle on the Hill' describes his love of the county.



Discover 'The Saints'

Packed with an eclectic mix of independent shops, eateries, and local artisans The Saints is a quirky and interesting thoroughfare in Ipswich town centre.

www.allaboutipswich.com/the-saints

OUR LOCATION

If you want the hustle and bustle of city life without the expense, you will love the convenience and location of Ipswich, the county town of Suffolk.



University of Suffolk

The University is located on the stunning Ipswich Waterfront, which is home to an active restaurant and bar scene, and offers exciting entertainment, from sailing opportunities in the marina to performances at DanceEast. The Waterfront also hosts the Maritime Festival, which sees 55,000 visitors all enjoying the best entertainment, food and drink Ipswich has to offer.

The main campus is located near to Portman Road, the home of Ipswich Town Football Club, and within easy reach of Ipswich's four theatres, which offer a diverse range of arts productions. The annual Ipswich Arts Festival hosts a series of events and exhibitions across the town.

Packed with shops, independent boutiques, restaurants, bistros, pubs and cafés, the town also benefits from being just over an hour away from London and has excellent road, rail and air links to the rest of the UK and overseas.

This flourishing town is the destination of choice for those seeking the best in entertainment, architecture and the arts, whilst retaining a hint of its peaceful, Dickensian charm, with hidden gems such as Christchurch Park.

Visit uos.ac.uk/location



WHY CHOOSE POSTGRADUATE STUDY

Why choose
postgraduate study

If you are a graduate of the University, a scholarship may be available for some postgraduate courses. Further details about the Alumni Postgraduate Loyalty Scheme are available on page 59 or by visiting uos.ac.uk/alumni

Join a diverse, aspiring, and growing postgraduate community at the University of Suffolk.

On our postgraduate programmes you will receive excellent teaching, delivered by academics established in their field of study. Your lecturers will have extensive specialist knowledge, and are actively engaged in research and scholarly activity.

Learning at postgraduate level enables you to focus on a particular area of study in order to enhance knowledge and skills and become an expert in that field. This is particularly relevant for those studying for postgraduate research degrees.

Reasons for choosing postgraduate study

There are many reasons to study at postgraduate level; some career paths, such as teaching, require a postgraduate qualification in order to enter the profession. In any case, undertaking postgraduate study in any field enables you to delve deeper into a subject area and develop your expertise. It also conveys to potential employers your ability to study and research at a higher level, dedication and commitment to learning, and mastery of your subject area.

For professionals, postgraduate study can provide a method to advance your career. Gaining advanced skills and knowledge in your chosen field can open doors, increasing your level of responsibility or creating new opportunities. Career progression in some sectors, such as academia and scientific research, can depend on postgraduate qualifications.

Benefits of postgraduate study

Your competitive edge

Studying for a postgraduate qualification provides the opportunity to enhance your employability and help you stand out in a highly competitive graduate employment market. You will gain specialist skills and subject knowledge in your field of study, as well as developing your transferable skills in areas such as communication, critical thinking, data analysis, problem solving, project management and research – all skills that employers value. You will gain an edge over other applicants when applying for jobs, but also open up new opportunities, in terms of moving your career in a different direction or having the confidence to apply for higher level managerial positions.

Relevant to you, relevant to employers

Many of our postgraduate programmes have a strong vocational focus, designed to be easily applied to the relevant sector you are working in. The PgD Human Resource Management, for example, enables you to apply for Corporate Membership of the CIPD as a registered HR practitioner. Research undertaken as part of the PgD or MSc Human Resource Management can be related to the industry in which you are working, providing benefit to both the student and employer.

Broad strategic knowledge

It may be that you are planning ahead for your future career. The strategic knowledge gained at postgraduate level across many programmes provides the basis for career progression but also enables you to be at the forefront of your field. The MBA – one of the most sought after qualifications in the world – offers you sophisticated business knowledge at a senior level of management and will significantly advance your leadership skills. Undertaking this qualification demonstrates determination to succeed in your chosen career area and will bolster your confidence. The MSc Business and Management provides the opportunity for those without managerial experience or background in business to gain the necessary knowledge and skills, giving you a competitive edge.

Advancement in academia

Although many students choose postgraduate study for career advancement or as a method of specialisation, it can also open up a career in academia or research. Postgraduate study provides the next step towards achieving a doctorate or a professorial title, where you become recognised in your field.

Being a postgraduate student

Choosing to continue onto a postgraduate level of study shows a commitment to both your subject and to the process of learning and self-development.

Some postgraduate courses offer you the opportunity to broaden your knowledge through the exploration of a new subject area. Other courses encourage you to build on your previous studies in developing particular expertise that will provide access to specialist employment opportunities or further study. Whichever type of course you embark on, your studies will equip you to meet both academic and practical challenges, demonstrating your readiness to contribute at a high level within commercial situations and research environments.

While you will be expected to develop your knowledge and practical skills, the emphasis in postgraduate studies is on the cultivation and application of higher cognitive skills. For example, you will be required to tackle complex problems for which there is no single solution, producing clear recommendations that are tailored for practical application in the real world. Similarly, you will be expected to enter into debate on the latest research topics, demonstrating the ability to understand, communicate and apply theories to resolve complex situations and to inform critical discussions.

Postgraduate courses demand a commitment from students to undertake significant independent study, taking responsibility for the investigation of specific issues through the interrogation of research literature, and for the communication of findings in forms appropriate to particular audiences. Your course tutors will provide you with opportunities to develop and receive feedback on these skills, encouraging and enabling you to achieve your full potential.

On your course you will work and study alongside your fellow students, forming friendships and relationships that will not only help you in your studies but may also continue well beyond your time here. Socially, you will have the chance to get to know fellow students from a wide range of cultures and nationalities and be exposed to many different personal beliefs and philosophies.

At the University of Suffolk, we are fully committed to supporting our postgraduate students, helping them make the best use of all the opportunities available, and enabling them to fulfil their aspirations by studying with us.

Visit uos.ac.uk/study



THE SUFFOLK LEARNING EXPERIENCE

Whichever course you choose to study with us you will experience the highest quality in your teaching and learning experiences.

We believe that learning is a partnership between the lecturing staff and the students, and this is particularly evident in our postgraduate courses. We recognise the journey of academic development that some students have taken already, on their path to exploring postgraduate opportunities. As developing subject experts, you will be expected to work with your course team in exploring and developing knowledge and proficiency in your subject. You will be expected to take a



lead in the exploration of particular issues for your benefit and that of your fellow students, enabling you to explore topics for which you have a passion or which have particular relevance to you.

Teaching styles employed on your course will vary depending on the nature of the subject matter and skills you are expected to learn or develop. Some course teams employ a problem-based approach to learning, using the challenges and complexities of particular practical situations to drive learning and subject exploration.

We aim to harness the latest technology and techniques to help you learn in a way that suits you and we are continually exploring new approaches to learning and assessing how we use them to enhance our students' experiences. All courses provide students with tutorial support, through which you will be encouraged to consider your own learning development in order to make best use of the learning opportunities available.


Postgraduate students are expected to be mature students who have already demonstrated their ability to study independently. Your tutors will support you to use and expand these skills, becoming a proficient and experienced learner able to contribute effectively to the learning community formed by the course.

Visit uos.ac.uk/teaching



RESEARCH

The University of Suffolk is dedicated to championing research in everything we do – from our innovative approaches to learning, our research-informed teaching, our curriculum and how we deliver it, to our new research initiatives which are having a significant impact locally, nationally and internationally.

A person's hand, wearing a gold bracelet and a ring, is gesturing towards a presentation screen. The screen displays a blue slide with the word 'Research' at the top and some blurred text below. The background is a plain white wall.

As a postgraduate student at the University of Suffolk you will be surrounded by people who will inspire you. We are very proud to have a wealth of outstanding academics across our Schools and you will be taught by academic staff who are at the leading edge of their discipline. Whatever you choose to study, you will be taught by lecturers and professors with real-world experience and research interests.

Our growing and vibrant research environments are made possible by talented people and strong collaborative networks. Our current research endeavours continue to make a real difference to people's lives and to influence policy and society. This research informs our teaching and can help you to develop into a highly employable, skilled and knowledgeable graduate.

The University has recently created a number of research centres and institutes, and made significant and strategic investments in its research environment. As a postgraduate there are opportunities to get involved with real-life research projects as part of your course and also through the research centres and institutes at the University of Suffolk.

We also offer a wide range of exciting postgraduate research degrees and postgraduate courses to further support developing research knowledge and skills through our Graduate School.

Visit uos.ac.uk/research

ENTERPRISE AND INNOVATION

We can connect you with numerous opportunities to develop your own personal and professional skills that can be applied in whatever career you choose to pursue.

Our Graduate School Researcher Development Programme (RDP) supports the personal effectiveness and professional development of our research and enterprise community. There are many opportunities for undergraduate and postgraduate students, particularly the development of entrepreneurial skills. Many of our alumni have gone on to set up their own businesses and you will be surrounded by opportunities to develop the skill set you need to do the same.

At the University of Suffolk our lecturers, students, and the business community collaborate on leading innovation projects. We have forged strong alliances with industry and specialise in translational research, rather than basic research, creating the opportunity to accelerate innovations to the marketplace and to train the specialised workforce that will achieve this.

The Ipswich Waterfront Innovation Centre (IWIC), which launched in October 2016, has been established by the University of Suffolk as a focal point for developing new entrepreneurs and ICT businesses. The IWIC is located within our newly refurbished building, The Atrium, and is a driver of innovation and growth among local entrepreneurs, innovators, students, graduates and academic staff. As a single point of integration and access between enterprise, facilities and academic expertise, IWIC provides networking and collaborative opportunities with subject areas including: STEM (Science, Technology, Engineering and Mathematics), Digital Creative, Leadership, Business Management, amongst others. There are opportunities to engage and develop as student entrepreneurs through the IWIC – developing your own business, networking with a large network of innovators and entrepreneurs across Ipswich and attending skills development workshops.

The Suffolk Centre for Female Entrepreneurship (SCFE) launched in October 2017 as a key partner of the IWIC. The Centre is a unique resource within UK Innovation Centres in both Suffolk and further afield, aiming to provide a leadership role and knowledge base for the support and promotion of female entrepreneurship, innovation within business and a reduction in gender inequality across all business sectors. The Centre will support students and

graduates to develop their entrepreneurial skills so that they will create, plan and develop their own businesses with inclusivity.

Also located in The Atrium, our 3D Productivity Suite has a range of 3D printers, including a new Industry Standard printer with the capability to work with almost any plastic, now and in the future, for applications across all disciplines. If you can dream it, you can build it, in a fraction of the time and at a fraction of the cost of traditional manufacturing methods.

Our Innovation Hub, located within the £25m James Hehir Building, was opened in partnership with leading technology companies Fujitsu and Intel in 2015, providing the latest technology facilities to the University and the local community. Our Biotechnology Unit has achieved important inward investment and continues to work with international partners, while the Suffolk Institute for Social and Economic Research (SISER) provides cutting edge research on areas such as Domestic Abuse, Sexual Abuse, Online Risk, Social Migration, Youth Justice, and Youth Unemployment.

The University has built a strong network with local, national and international organisations, companies and institutions to further enhance your skills and provide invaluable experience for any chosen career. This includes a range of partnerships with large multinationals, such as BT, through to national consumer brands, sourced and manufactured in Suffolk. We have a strong relationship with Ipswich Town Football Club through our unique Integrated Masters degrees delivered in partnership with the Ipswich Town Academy. Students gain incredibly valuable experience of working in elite sport science and medicine support with professional footballers.

Visit uos.ac.uk/businessengagement

FACILITIES AND RESOURCES

At the University of Suffolk, whatever you choose to study, you will be working in state-of-the-art surroundings. We have invested across the University to create environments that showcase the latest teaching facilities and support our students to achieve great things.

At our main campus in Ipswich the Waterfront Building has a large auditorium and lecture theatres, as well as numerous teaching rooms for small or large groups. Every teaching room has state-of-the-art AV equipment enhancing your learning experience. There are open study areas on all floors to enable flexible learning. These areas provide the opportunity to access networked computers and iMacs, or to meet with fellow students and staff.



Photo by: Phil Grayston, Bond Bryan Architects

Located in The Atrium, the Virtual Environment for Radiotherapy Training (VERT) suite is just one of the various specialist facilities developed as part of a £5.5m refurbishment of an existing building. The building now provides specialist teaching facilities, including Psychology, Computer Games Design, Network and Software Engineering labs. It also houses a dedicated Business and Innovation space, the Ipswich Waterfront Innovation Centre (IWIC).

The James Hehir Building includes the latest purpose-built Clinical Skills and sports and exercise laboratories, as well as specialist bioscience teaching and research facilities; all of which have been created to give you the tools you need to achieve your full potential. The Innovation Hub provides a range of Fujitsu technology, including tablets, notebooks, laptops, desktop PCs and workstations. These systems run on the latest Intel® processor technologies, providing students with the opportunity to develop their digital skills using innovative equipment.

Among its many facilities, the Arts Building has painting, sculpture, drawing and print studios, installation and video spaces, a film studio, and industry standard studios, dark rooms and digital suites specific to photography.

Our Learning Services team work with you from the moment you decide to join the University of Suffolk through to graduation and beyond.

We provide you with the resources you need for your reading and research in all areas of your study.

These are provided through our online search platform and include:

Millions of full text electronic journal articles

300,000 full text e-books

Over 1 million streamed broadcasts from over 60 TV and radio channels

DVDs

Printed books and journals

Online reading and resource lists

Subject guides bringing together key resources and relevant information sources

Students can utilise our study spaces, IT facilities and borrow from all of the libraries across the University of Suffolk Learning Network, including the library at our main campus in Ipswich, which is open seven days a week, all year round.

Support

Throughout your study, we aim to work with you personally to build your confidence and develop the skills you need to undertake your studies and beyond.

Our team of Academic Skills Advisors, Academic Liaison Librarians and Learning Technologists create and deliver a range of workshops tailored to developing academic skills such as; referencing, academic reading, critical writing, proof reading and more.

One-to-one support is also available to you and bookable online with our team who will be able to offer



you advice and guidance with all aspects of academic work, including assignment help, maths and statistics, research skills and the use of technology in learning.

Online Services

Our next-generation online learning environment has the ability to transform learning into a digital experience by providing you with an individualised learning path, by enabling flexible pacing, communication and collaboration, and by offering an adaptive learning style that breaks free of traditional “one-size-fits-all” learning models.

As part of our online learning environment you have your own personal portfolio tool for storing, organising, reflecting on, and sharing items that represent your learning and research.

As well as online resources and learning environments, we also offer a wealth of support on our website that includes a suite of online courses and toolkits.

Visit libguides.uos.ac.uk

STUDENT SERVICES

We recognise the importance of being here if you need us. We offer a range of specialist advice and guidance services.

We provide one-to-one advice and deliver workshops and presentations. We also arrange events to address and raise awareness of a diverse range of topics, inspiring and supporting you with your academic, personal and professional progression.

Expert support is on hand at the University of Suffolk whenever you need it.



Careers and employability

Our Advisers are here to provide impartial advice and guidance to support you with your personal and professional development before, during and for up to three years after you graduate. You can also access FutureMe, your online career centre, offering a wealth of interactive resources and tools that can be accessed whenever and wherever you need them.

Disability support

We welcome students with disabilities, mental health difficulties and/or specific learning differences, and aim to create an environment which is accessible and inclusive for all students. We plan with each individual to ensure appropriate support is in place and can advise of eligibility for Disabled Students' Allowances (DSAs). Your individual needs and support arrangements can be discussed with a member of the team before you start your course or at any point throughout your studies.

Health and wellbeing

We can provide guidance on how to register with a local GP, as well as how to access sexual health and well-being services. Maintaining good mental and physical health is important and we actively raise awareness of strategies and initiatives that may help in managing your life as a student.

Childcare

If you have dependants, we can advise you of funding that may be available.

Financial support

Our expert advisors can advise you on financial support that may be available to you.

Counselling

We can provide independent, impartial and professional counselling. This support is confidential and can offer an opportunity to explore topics such as exam anxiety, low mood, stress, relationships and personal issues.



Chaplaincy

We are a multi-faith community and welcome students from a diverse range of backgrounds. Our multi-faith chaplaincy, at our main Campus in Ipswich, is open to both staff and students, of all faiths and no faith.

Suffolk Life Mentor Scheme

Suffolk Life Mentors are experienced students who can offer information and support to help with your transition to University. Suffolk Life Mentors also organise activities to help you learn more about university life and to meet new people.

Visit uos.ac.uk/studentservices

STUDENT LIFE

As a postgraduate student you will be part of a diverse and vibrant student community.

We span all ages and backgrounds, and this variety makes the University an interesting and inspiring place to study. We value the interaction between full and part-time students and believe it brings great benefits to the student experience.

As a University of Suffolk student you will automatically become a member of our Students' Union (SU). The SU exists to represent the student voice via our democratic structures, in particular the roles of President, Vice-President, Student Officers and Course Representatives. We provide independent support to all students via SU Advice.

Our role is also to enhance the student experience by offering a range of student-led social and sporting activity to our members. We participate in competitive sports including football, netball and futsal via the British Universities and Colleges Sports (BUCS) scheme. Our weekly social sport programme offers fitness for £1 per session and includes Yoga, Boxfit, Badminton and Aerobics. We work closely with the University and local partners to initiate student packages for local gyms and

swimming pools, such as the Goals Centre and Fore Street Swimming Pool which are just a few minutes' walk from the main campus. Most locally, the Waterfront Gym, located on the ground floor of Athena Hall, is available to students at a substantially discounted cost, with no minimum contract.

Our annual programme of events is open to all students and includes social gatherings and formal occasions such as the summer ball and events at our partner bars and clubs. We support an annual programme of student-led Society events.

You can take advantage of cultural and sporting events such as the Ipswich Arts Festival, Latitude and the Great East Run, as well as larger national events on the Ipswich Waterfront.

At the Ipswich Campus there are numerous cafés where you can enjoy a coffee and a catch up, and the student bar, Cult, located in the James Hehir Building with a programme of live music events and entertainment.

**Visit uos.ac.uk/studentlife
www.uosunion.org**



ACCOMMODATION

Our Infozone team are on hand to provide advice on aspects of choosing and renting accommodation.

Accommodation



We can advise you about recommended on-campus and accredited off-campus accommodation provided by private landlords that we work with.

The on-campus halls of residence, Athena Hall, is located just 300 metres from the Waterfront Building and adjacent to the James Hehir Building on the Waterfront. Local shops and amenities are close by and the town centre is just a 10 minute walk away. Housing up to 590 students, Athena Hall offers a mixture of cluster flats and studio rooms, which are popular with mature students or student couples.

Accredited off-campus accommodation includes a variety of halls of residence and shared houses. Suffolk Studentpad is available to applicants once they have applied for a course and enables applicants to search for accommodation using their preferred criteria.

We recommend you research the options available to you before deciding which accommodation to book. To find out more about accommodation available please visit the website and then contact the Infozone on **01473 338833** or email **infozone@uos.ac.uk**

Visit uos.ac.uk/accommodation

ACADEMIC SCHOOLS



Academic teaching at the University is based around six academic Schools. Each School has its own expertise and ethos which is reflected in its portfolio of courses.

Our culture is very collegiate. Everyone is empowered to succeed. We engage in the effective production, transfer and dissemination of knowledge. Work-based learning is an integral aspect of all our programmes and we have strong partnership links across a variety of sectors.

School of Art, Design and Humanities

We are small by design and big in ambition. We are proud to boast a community of highly satisfied students, with consistently high satisfaction scores.

Community is very important to us. Our students appreciate their sense of place here. Whether you're an artist or historian, a dancer, a linguist or photographer, an architect, designer or film maker, you'll discover your 'space' and learn to develop your own unique interests.

We are fortunate to have our own dedicated, purpose-built arts facility. This is a self-contained building with specialist facilities where you can engage in both the theoretical and practical aspects of your work. Our courses are led by experts in their fields of study, who work closely with you to offer the kind of opportunities that are rarely available in larger institutions.

Dr Lisa Wade
Dean of School

School of Health Sciences

We provide high-quality training for healthcare professionals, enhancing patient experience and supporting the local community and NHS. We pride ourselves on our close working relationship with our placement providers and clinical partners to ensure you are given the knowledge and tools to have a transformative effect on health and social care, as well as a fulfilling career.

By working closely with public and private sector organisations, our placement opportunities will help you:

- Develop your practical skills and confidence in a real-world setting
- Make contacts in industry
- Maximise your employability prospects

We are a team of highly qualified, research-active healthcare professionals who are dedicated to providing you with a first-class training experience and individual support throughout your course.

With access to state-of-the-art clinical simulation facilities, an individualised learning experience, and high levels of support, we know our students can expect to have life-long employment opportunities. We are extremely proud of the employment rates of our students within six months of graduation.

Paul Driscoll-Evans
Dean of School



School of Law and Social Sciences

Our School is all about making a difference in the world. This is reflected in the range of subjects we teach, all of which focus on how to make life better and fairer. We provide you with the support you need to thrive in your university life and beyond. You'll be supported and inspired throughout by lecturers who are passionate about sharing their expertise and interests with you.

Not all universities are the same. Our focus on real-world issues feeds through to our lectures. Here, theories are not simply academic subjects to learn; instead, we always look at how ideas explain and impact on 'real life'. Police and Crime Commissioner, Tim Passmore, said that the University often explores issues others shy away from. We are building our reputation for hard-hitting research.

Our students become resilient during their studies and have the ability to cope with change. They develop confidence and adaptability, and positively take comfort from a changing world. We're a modern, tight-knit university where you won't get lost in the crowd. You will further your love of your subject and we know that, nationally, social science graduates have great job prospects.

Professor Noel Smith
Dean of School

School of Psychology and Education

We aspire today to inspire tomorrow. We take a holistic view of psychology, care and education, with particular expertise in young people. Our courses are designed to give you the knowledge and skills for a successful career, whether you aspire to become a leader, manager, coordinator, teacher, early-years professional, entrepreneur, business owner or something else entirely.

Our School is well known on the international stage. We were the first institution to run the Early Childhood Studies degree programme in the UK, and we organise and host the biennial International Children and Childhood Conference. As experienced as we are passionate, we draw on our own research to support your learning and help you to explore your passions and interests.

Our values are founded on the principle that education is for everyone. Education is a right, and has the potential to transform lives. We believe that children, young people and adults all deserve the right to a high-quality education as a foundation for a more secure future. We are committed to developing knowledge and skills that are transferable and necessary to succeed in a changing world.

Professor Erica Joslyn
Dean of School

School of Science, Engineering and Technology

Our School is a vibrant, innovative, interdisciplinary environment for learning, research and knowledge exchange. You will be taught by a team that includes world-recognised researchers and industry experts, whose knowledge and original research will help you to develop the real-world problem-solving skills that will enable you to thrive in your studies and future career.

Students are at the heart of everything we do. We treat you as a partner, empowering you to take charge of your learning in an inclusive and supportive environment.

Our facilities are second to none. Our specialist facilities and world-class equipment enable you to develop with the hands-on industry-standard skills that will help you succeed in your field. Our strong collaborative links with partners includes BT, Fujitsu, Intel, Microsoft, Arsenal Football Club, Ipswich Town Football Club, Envigo, DuPont, and Muntions – to name just a few.

Professor Mohamed Abdel-Maguid
Dean of School

Suffolk Business School

We have high expectations of our students. We recognise that your background and experience are unique, so we work with you individually to build your confidence and resilience. We insist on treating you as a professional from day one of your studies so that you develop into a switched-on, career-oriented graduate who is able to make an immediate impact in your future career.


Throughout your degree you will have the opportunity to work with a range of businesses, from exciting new start-ups to multinational companies operating all over the world. Unlike many traditional institutions, we are fully embedded within our local community and the regional economy. We consider ourselves to be a leading partner in the development of tomorrow's business leaders.

Suffolk is a hotbed of creativity and entrepreneurialism, and Ipswich has recently been voted the best place in the UK to start a new business. We believe there is no better place to study. We are at the heart of this burgeoning community, drawing entrepreneurs from across the county and further afield through events such as the annual Suffolk Business Festival, which is held on campus every autumn.

Professor David Collins
Dean of School



GRADUATE SCHOOL



The University of Suffolk is committed to the development of high-impact innovative research across a range of disciplines. Our postgraduate researchers, the new generation of thinkers and researchers, are essential to ensuring our research remains original and dynamic.

The Graduate School supports PhD students with the delivery of our postgraduate research programmes and is committed to providing an excellent PhD experience. We understand the challenge of completing a PhD and will support this rewarding journey within an inspirational and supportive community of academic experts, peers and our local community.

During your period of study, the Graduate School staff will be your first port of call for questions relating to the administration and progress of your PhD, research skills development opportunities, ethical guidance and any matters relating to research funding.

At the heart of the campus, in the Library Building, the Graduate School provides a dedicated space to study and to socialise, exclusively for postgraduate researchers.

An important part of your time as a research student at the University of Suffolk is working to develop the skills you need to be successful

in your studies and, beyond that, after you graduate. In order to enhance the learning experience of all research students, the Graduate School runs the Researcher Development Programme (RDP).

This programme has been developed using a skills framework created at a national level to ensure that universities across the country support the growth of a range of abilities needed by successful researchers. Through skills events and training workshops organised by the Graduate School, interaction is encouraged between students from different academic disciplines, resulting in a vibrant and supportive postgraduate community. All students can also access the training events at the University of East Anglia (UEA) at no additional cost, providing you with access to further opportunities for development and interaction with the UEA postgraduate community.

Professor Emma Bond
Director of Research

STUDENT
PROFILEJames
Parslow-Williams**PhD student**

With the high quality of supervision, support and personal growth that I gained with my MBA from the University of Suffolk, I felt that the PhD programme was the next logical choice for me. Throughout the application process I felt that the University was beside me at each step. Part of the reason for choosing to carry on with my education was that I felt I had more to give; the content of the MBA had provided the perfect stepping stone for me to move into developing this area of management.

As part of the programme I was assigned two supervisors, with whom I have met on a regular basis to discuss progress and to guide me through my PhD. The allocation of supervisors is carefully considered. Each meeting opens up new avenues of thinking and learning.

The prospect of being in the top 1% of the population in terms of academic achievement, as well as holding the title of Doctor of Philosophy, makes all the hard work worthwhile. Knowing that I have contributed to the advancement of knowledge within my area is also a drive that I know will keep me motivated. Having gained the PhD, I see myself transitioning into the role of a university lecturer to hopefully develop students with the same level of expertise and support that I am receiving.



PHD STUDY

The University of Suffolk is a great place to begin your research journey and embark on a postgraduate research degree.

Working closely with academics in one of our research areas and supported by our commended Graduate School you will have an excellent experience and become a valued part of our emergent research community.

Students wishing to undertake a research degree with us will enrol and be supervised at the University of Suffolk in Ipswich and will be registered with the University of East Anglia (UEA). On successful completion, your PhD will be awarded by UEA. This partnership ensures that you are able to access high-quality supervision here in Ipswich and take advantage of the specialist areas of research on offer, whilst also getting the benefits of association with one of the UK's best research-intensive universities.

As a result of the partnership you will have access to the variety of training workshops and events held at both the University of Suffolk and UEA.

The PhD is the UK's highest academic qualification and recognises an original contribution to knowledge. Your supervisory team will support you through your PhD journey and are on hand to provide advice and guidance as you progress through your studies.

Full-time students studying for a PhD will register for a minimum period of three years. Part-time students will register for a minimum period of six years. For more information about studying for a research degree, please contact the Graduate School graduateschool@uos.ac.uk

We work in partnership with the University of East Anglia (UEA) to provide PhD courses in the following research areas:

Business
Management
and Heritage

Computer Science
and Informatics

Education

English

Health and Biological
Sciences

History

Psychology

Social Policy

Social Work

Sport and Exercise
Science

Sustainability



Visit uos.ac.uk/graduate

STUDYING AT SUFFOLK

We offer a range of postgraduate opportunities, including Masters degrees, Postgraduate Diplomas and Certificates, along with Continuing Professional Development (CPD) courses.

Employers play an important role in the development of new and existing courses, and we are committed to building lasting and mutually beneficial relationships with businesses.

Masters

Many of our postgraduate degrees lead to the award of a Master of Arts (MA), Master of Science (MSc) or Master of Business Administration (MBA). They are usually studied full-time over one year or part-time over two to five years. Applicants will usually hold the equivalent of an Honours degree from a UK university, though other qualifications of similar standing will be considered.

Postgraduate Diplomas

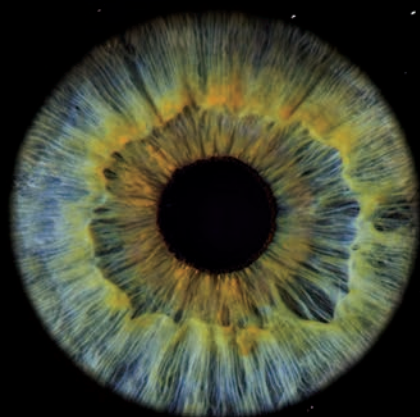
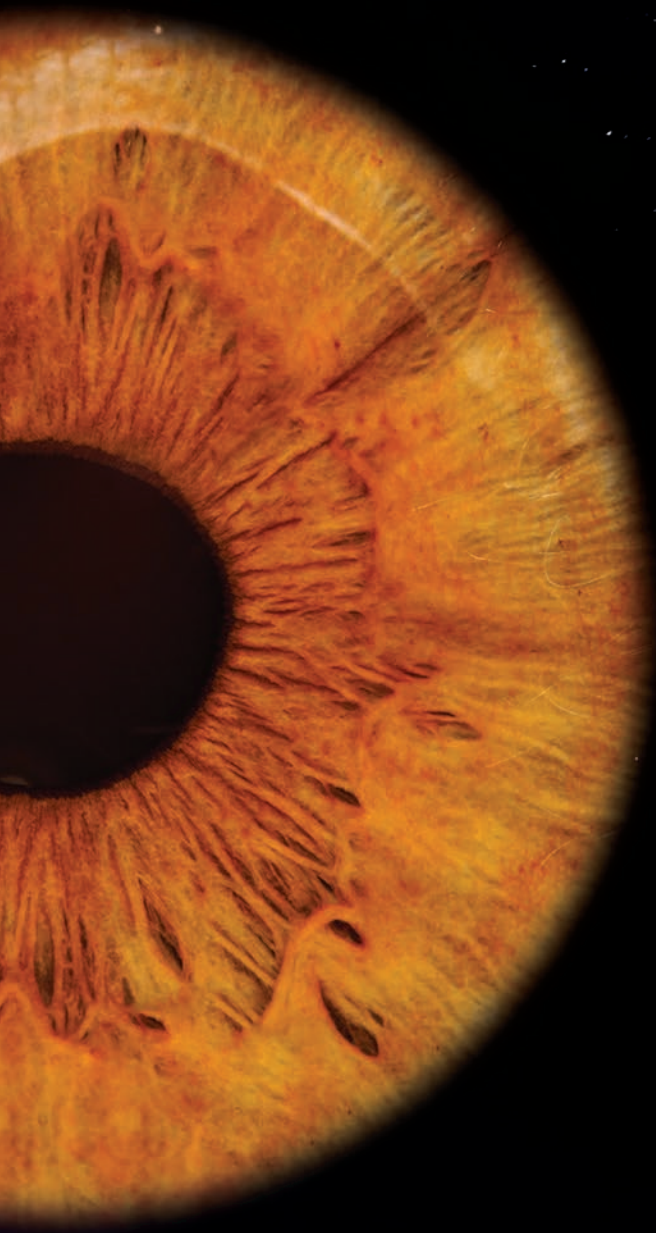
We offer a number of Postgraduate Diplomas. Some consist of the same modules and examinations as for a Masters degree, but without the dissertation, and can be used as credits to progress to a Masters qualification. Others are offered as standalone qualifications specifically developed for professionals within a particular sector and carry accreditation from professional bodies. All are taught either full or part-time depending on the programme.

Postgraduate Certificates

Postgraduate Certificates are ideal for prospective students who wish to undertake further study but only want to commit for a short period of time. They also provide a progression route to Postgraduate Diplomas and Masters. They are offered as standalone courses developed for professionals within a particular sector. All are taught either full or part-time depending on the programme.

Visit uos.ac.uk/qualifications







The university that
sees the individual.

POSTGRADUATE TAUGHT DEGREES

On the following pages you will find all the postgraduate taught degrees available at the main campus in Ipswich (unless otherwise stated).

Course	Award	Page number
Advanced Healthcare Practice	MSc/PgD/PgC	33
Applications of Psychology	MSc	34
Master of Business Administration	MBA	36
Business and Management	MSc/PgD/PgC	37
Childhood Studies	MA	39
Crime and Community Safety: Evidence Based Practice	MSc/PgD/PgC	40
Education Studies	MA/PgD/PgC	42
Games Development	MSc	43
Professional Practice in Heritage Management	MA/PgD/PgC	44
Human Resource Management	PgD	45
Human Resource Management	MSc	46
Professional Graduate Certificate In Education / Certificate In Education	PGCE / CertEd	47
Billericay Primary SCITT	PGCE	48
Billericay Secondary SCITT	PGCE	48
Inspiration Trust Primary SCITT	PGCE	48
Inspiration Trust Secondary SCITT	PGCE	48
North Essex Primary SCITT	PGCE	48
North Essex Secondary SCITT	PGCE	48
Suffolk and Norfolk Primary SCITT	PGCE	48
Suffolk and Norfolk Secondary SCITT	PGCE	48
Regenerative Medicine	MSc	49
National Award Special Educational Needs Coordinator (SENCO)	PgC	51

**For more information on our courses please visit:
uos.ac.uk/postgraduate**

Please note that applicants will need to fulfil the specific entry requirements detailed fully on the course pages of the University of Suffolk website. Individual course requirements do vary and some may specify particular subjects or grades in addition to the typical offer stated in this course listing.

Some of our courses also have February start dates available to enable students to access postgraduate courses at different points throughout the year. Please see our website for further information.

Advanced Healthcare Practice

The MSc Advanced Healthcare Practice is a programme which enables experienced healthcare professionals to gain the skills and knowledge required to work successfully within the advanced practice arena. In both the acute and primary care settings, our course cultivates a patient-centred and holistic approach.

This course is also open to Nurses and Allied Health Professionals (AHP) who are working within an advanced role or who wish to progress to an advanced role. This course will be of interest to a range of healthcare professionals including nurses, operating department practitioners, paramedics, pharmacists, physiotherapists and any other AHP working at an advanced level.

As well as the taught content, there will be opportunities available for postgraduate students to extend their academic ability through seminars, tutorials and critical debates with their peer group.

Graduates of this programme are well placed to seek roles such as Consultant Practitioners, Practice Educator, Critical Care Outreach, Ward/Department Managers, or Clinical Matrons. There is also the potential for the programme to act as a springboard to doctoral level study.

MSc/PgD/PgC

Duration

A maximum of five years part-time

Apply online

uos.ac.uk/apply

Entry requirements

Currently working in a healthcare role requiring advanced practice knowledge and skills.

Hold an approved Bachelors (Honours) degree or other equivalent qualification.

Be able to provide evidence of adequate training and ability to undertake Level 7 study.

Applications of Psychology

For those who are eager to expand their knowledge of psychology further, this course is ideal. It is also an appropriate progression for those who are interested in vocational psychology roles which increasingly require doctorate training. With a number of roles now having this requirement, there is a need for students to gain experience and knowledge in order to gain a place on the doctorate programmes. The additional experience and knowledge gained from completing this Masters, better equips graduates to compete for a place on a doctorate programme.

You will be expected to demonstrate the capacity to formulate research questions, study designs, and ethical considerations, before carrying out and reporting on your findings.

The four mandatory core modules include Research Design and Statistics, Clinical Applications in Psychology, Psychological and Neuropsychological Assessment, and the Dissertation. A broad spectrum of optional modules provide the opportunity to identify a specialism which may include, subject to staffing: Clinical and Educational Psychology with Children and Adolescents; Health Psychology; Applied Sports Psychology; Applications of Counselling Psychology; and Psychology in Practice (a placement module).

It is a requirement to have a Bachelors (Honours) degree in Psychology for this programme, however, if you have a degree in another discipline but are looking to make a career change into Psychology, you can apply to undertake a Graduate Conversion Course in Psychology accredited by the British Psychological Society.

Visit www.bps.org.uk/public/become-psychologist to view the accredited courses available.

MSc

Duration

One year full-time

Two or three years part-time

Apply online

uos.ac.uk/apply

Entry requirements

Hold a Bachelors (Honours) degree in Psychology at 2:1 or above, which confers eligibility for the Graduate Basis for Chartered Status with the British Psychological Society (BPS). Those with a 2:2 are advised to contact the Course Leader before applying.

GCSE grade C or above in English and Mathematics (or equivalent).

STUDENT
PROFILELee
Mathews**MBA student**

The University markets itself as an agent for change and I am a strong believer in the importance of being able to understand and influence change in organisational life as well as personally, so this appealed to me. It is accessible to everyone and very inclusive; everyone is made welcome and there is a definite feeling that everyone (both staff and students) wants to help each other to be successful.

I chose to study the MBA as it offers a high level understanding of the issues facing managers today and provides guidance and the opportunity to learn how to approach these issues. After such a long time away from education I was unsure of what to expect but the course is very relaxed and the University provides a great environment to study that facilitates learning.

So far I have enjoyed the Organisational Behaviour and Managing Strategic Change modules the most. I worked as an Operations Executive for over 20 years and have not been in a formal education environment for over 25 years, so actually, I felt incredibly excited and privileged to learn new things and see old things through academic eyes rather than practitioner eyes.

On completion of the MBA I will be pursuing opportunities in people centric roles where I can use my learning to add to the experience I already have from my previous working life. Most importantly though, I will be looking for something I will enjoy – when I left my previous role to take a year out to do my MBA, I made a commitment to myself that when I return to work, I want to be in role where when the alarm goes off in the morning I want to think to myself, “I am looking forward to today”, that is the most important thing to me.



MBA

Master of Business Administration

The MBA is one of the most sought-after qualifications in the world. It represents significant value to both private and public sector organisations. The MBA offers sophisticated business knowledge at a senior level of management and significantly advances leadership skills.

The MBA offered at the University of Suffolk is formally accredited by the Chartered Management Institute (CMI). Once registered with the CMI, our MBA graduates are entitled to receive two additional awards upon graduation: their MBA degree and their Level 7 CMI Diploma in Strategic Management and Leadership, and Level 7 Award in Professional Consulting, qualifying them as formal members of the Institute.

Flexibility: At Suffolk, you can choose to study your MBA on a full or part-time basis. The flexible structure provides an opportunity to build up credit over time towards a full MBA. It incorporates intermediate awards, including the Postgraduate Certificate in Management and the Postgraduate Diploma in Management. Alternatively, students can also opt to take just one module as part of a Continuing Professional Development programme.

Coverage: The core programme is wide-ranging and includes modules in Organisational Behaviour, Managing Strategic Change, Project Management, Managing through Finance, Research Methods, Strategic Marketing, Consultancy Management and Consultancy Management with International Business.

Practical: Students will be involved in live management issues through various projects and assessments, developing leadership and management skills, undertaking both group based and individual work. Students are also invited to guest lectures by practising managers, each of whom has extensive experience in their particular field.

Distinctive: The MBA at Suffolk not only embraces the international dimensions of business and commerce, but, for those students who opt to study the Consultancy Management with International Business module, includes a week's consultancy experience in another country.

Duration

One year full-time
Two and a half years part-time

Apply online

uos.ac.uk/apply

Entry requirements

Applicants are required to have **one** of the following:

Hold a Bachelors (Honours) degree at 2:2 (or above) or professional qualification of graduate status; or

Hold an HNC or HND and have three years management experience; or

Have five years significant management experience

And demonstrate an ability to discuss and debate pertinent business issues during your interview.

The MBA aims to develop analytical and strategic management skills using concepts derived from a wide range of academic disciplines. Graduates are able to respond creatively and effectively to the challenges presented by a global business environment, and on completion, broaden the range of strategic management responsibilities they can undertake at a senior level.

Business and Management

The MSc Business and Management provides students with a thorough grounding in vital business and management practices and the contexts in which they operate. The course philosophy focuses upon the role of modern business and management, and the varied, and sometimes complex, mixture of knowledge and skills that drive the revenue streams of these modern entities.

Modern businesses have become more diverse; the balance of power has shifted significantly in favour of the customer, who now has more control of the relationship than ever before. In addition, technology has brought in new media channels and cultural norms. Therefore the role of business and management has altered, as has the scope and role of management, which is changing in response.

This programme gives students the opportunity to explore core modules, including Global Enterprise Management, Reaching Global Markets, Knowledge Management and Information Systems, Innovative Entrepreneurial Society: New Business Models, Organisational Behaviour, and Research Methods. Students are also able to choose one optional module, either, Managing Through Finance or Islamic Business and Finance.

This is an innovative, dynamic and flexible programme that critically examines development of business and management in a globalised world. Recent graduates of any discipline are eligible and through this course will quickly become well-versed in business and management related matters, ready to work and lead in this challenging environment.

Studying the MSc Business and Management significantly enhances career and promotion prospectus. On completion, graduates are well placed to run their own business, enter employment in high level management positions, or complete further academic study such as a PhD.

MSc/PgD/PgC

Duration

One year full-time
Two years part-time

Apply online

uos.ac.uk/apply

Entry requirements

Applicants are required to have **one** of the following:

Hold a Bachelors (Honours) degree at 2:2 or above; **or**

Hold an HNC or HND or a Foundation degree and have two years relevant experience; **or**

Have acquired qualifying experience through professional employment recognised as equivalent to a degree that enables the candidate to study successfully at Masters level.

And, have two satisfactory referees.

STUDENT
PROFILELucy
Guerreiro**MSc Business and Management Student**

Before joining the University I completed a Bachelor in Arts in Brazil and in September 2017 I completed LLB (Hons) Law with the Open University. I wanted to explore my options outside of Law; whether or not I practice law in the future, I believe the MSc Business and Management will support me with a more holistic understanding of business. This knowledge and experience will prove invaluable when considering my future client's needs and interests.

I chose to study this Masters programme because of its wide breadth of business topics that would help me develop theoretical and practical skills in business. I chose the University of Suffolk because of the very good reputation it has, the quality of its staff and student body, and variety of corporate and entrepreneurial opportunities available.

All of the lecturers are really friendly and supportive, always going the extra mile to support us to achieve our best. They treat every person as a unique case and help them find their own niche, realise their own ambitions.

The University enables us to have strong relationships with some of the most prestigious companies and start-ups in the world. Attending the University of Suffolk had enabled me to connect with these companies and stand out in the job market.

Childhood Studies

The MA Childhood Studies course takes an informed, critical, and dynamic approach to the academic study of childhood and encourages students to develop their own interests and professional practice.

We draw on perspectives from sociology, social policy, geography, anthropology and history, and critically examines the changing landscape of childhood in modern society.

The course is informed by the United Nations Convention Rights of the Child (UNCRC) framework and is committed to a child-centred philosophy. Modules reflect on the principles of protecting the rights and interests of children, the diverse and global conditions of childhood, and the increasing importance of their participation in society.

This taught Masters programme uses a flexible, blended approach to learning; face-to-face lectures, seminars and tutorial support are complemented by online resources, interactive learning tools and self-study materials.

This exciting programme has been developed for students looking to supplement an undergraduate degree or senior professionals interested in specialised or advanced study of childhood. It will be of particular interest to those wishing to be or already employed in the children and young people's workforce.

MA

Duration

One year full-time
Two years part-time

Apply online

uos.ac.uk/apply

Entry requirements

Hold a Bachelors (Honours) degree at 2:2 or equivalent.

On completion, it is possible for graduates to fast track to management with employers such as Local Authority, national and international charities, state and independent schools or nurseries, and Health Authorities. It is also possible to continue further research or work internationally.

Crime and Community Safety: Evidence Based Practice

Criminal justice practitioners and professionals working in the law enforcement arena today increasingly require skills and understanding at an advanced level in order to embed an evidence-based approach into their professional practice and, beyond that, into their working environment.

This Masters course will provide graduates with an advanced understanding of crime, criminological theory and criminal justice and will upgrade the skills of senior professionals to enable them to drive an evidence-based approach to policing and to decision-making. It will embed the theories, principles and practices of an evidence-based approach and will equip students with analytical, problem solving and leadership skills necessary to address the challenges they encounter in the twenty-first century.

The programme explores key themes and issues in criminal justice; the application of criminological theory and approaches to understanding crime and conducting comparative police and criminological research. It will equip students with the research skills they require to: understand crime problems; design and effectively evaluate pioneering evidence-driven solutions; and systematically evaluate performance in order to develop and sustain a culture of innovation in public sector management and interprofessional practice. At the conclusion of the course, students will understand crime in its contemporary global context and will be able to understand 'what works' in relation to addressing it.

MSc/PgD/PgC

Duration

Two years part-time

Apply online

uos.ac.uk/apply

Entry requirements

Have a background in criminology or related social science subject area through previous study (minimum Bachelors (Honours) degree 2:2 or equivalent).

Have acquired qualified experience through professional employment that enables the candidate to study successfully at Masters level.

STUDENT
PROFILE**Amanda
Murr****MSc Crime and Community Safety:
Evidence Based Practice Student**

I work for the police looking after the strategic issues surrounding matters relating to vulnerability. I had the opportunity to study at the University through my employer as part of its development of an evidence-based policing approach. I felt undertaking this Masters degree would assist me to develop personally and improve my working practice, which it has already. I haven't got a degree but that didn't put me off applying.

Studying the MSc Crime and Community Safety: Evidence Based Practice has given me a voice in the workplace. It has given me the confidence and ability to contribute effectively in the workplace; now when I read published reports I'm actually enjoying critically analysing them and confidently provide evaluation for my employer on national and local issues. The course gets you to consider how and why policing has evolved and how partnerships need to work together to protect those who are vulnerable.

Returning to study is hard work and intense but the tutors are there if you need support and it is making a real impact, changing the way I do my job. Immersing yourself in education is challenging and you have to be disciplined with your time whilst fitting everything else in, but you will be surprised to see what you can achieve if you put your mind to it.



Education Studies

Masters level study is viewed by many as being essential for career progression and supports professional development in education and related fields. This course provides the opportunity to develop knowledge and understanding of the current educational landscape and to engage with wider theories and issues. Students on the programme will develop critical thinking and hone higher level skills.

Students can undertake either a Postgraduate Certificate (PgC), a Postgraduate Diploma (PgD) or a full MA in Education Studies. Optional modules allow the pursuit of different routes, including leadership and management and early career development or a focus on areas of interest relevant to the student's own professional practice.

Optional modules include Theoretical Foundations, Recent Developments in Pedagogy, Curriculum and Assessment, SENCO - Guiding provision and practice, Technology Enhanced Learning and Teaching, Mentoring in Education and Leadership for Educational Change and Improvement.

You will have the opportunity to undertake a dissertation in a particular area of interest.

Graduates of the MA Education Studies can pursue a wide range of roles, such as Middle or Senior Leader, Curriculum Coordinator, Educational Welfare Adviser, Community Education Officer or Children's Services Officer. It is also possible to complete further research working as a Research Assistant or progressing to PhD study.

MA/PgD/PgC

Duration

Two to three years part-time

Apply online

uos.ac.uk/apply

Entry requirements

Hold a Bachelors (Honours) degree normally at 2:2 or above (or equivalent). Applicants without this qualification, but who have substantial relevant professional experience, may also be considered.

Have 'access to practice', with the following criteria; access to teaching and supporting teaching and learning in a relevant statutory, private, voluntary and independent setting with a direct responsibility for learning.

Games Development

The MSc Games Development course provides students with a higher-level understanding and direct professional experience through a multidisciplinary approach. You will be provided with a development environment in which you can explore a range of creative games in both the digital and non-digital spaces. These will be developed using real-world workflow methodologies, deadlines and constraints.

While this course is ideal for graduates who have completed a BA (Hons) Computer Games Design or BSc (Hons) Computer Games Programming undergraduate degree, we actively welcome applicants from a wide variety of backgrounds who are considering breaking into the games industry. This helps create a dynamic and vibrant learning environment where students can contribute to the creative process using their own specialist backgrounds and interests. We have collaborative partnerships in place with community organisations and employers including commercial and third sector organisations. For example, this course has a unique partnership with Iron Crown Enterprises, publishers of the Rolemaster, Spacemaster, HARP and HARP-SF role play systems.

The MSc Games Development is an academically challenging degree which will require you to underpin your development work with rigorous academic research of current theories.

As a graduate of this programme you will have the opportunity to progress in a range of art, design and programming careers across the games industry. Your technical and project management skills will also be in demand within the serious games sector, in training, simulation, health care and engineering. The MSc Games Development would also provide a valuable step towards PhD research.

Students work on projects with a range of industry partners including Ubisoft, Dreadnaught Studios, Miracle Tea Studios, Ipswich Games Hub.

MSc

Duration

One year full-time
Two or three years part-time

Apply online

uos.ac.uk/apply

Entry requirements

Hold a Bachelors (Honours) degree in a relevant subject at 2:2 or above.

Professional Practice in Heritage Management

Heritage is everything we have inherited from the past - Heritage Management is about how we can explore, protect, conserve and interpret that inheritance to give it a sustainable future. Heritage is also an important and growing contributor to the economy. As a result, Heritage managers can be found working in a broad range of roles in local and national government, heritage organisations such as the National Trust and English Heritage, and across a diverse range of museums and heritage sites.

The fragile remains of the past, from major structures to oral traditions, are facing huge challenges and this course is designed to enable practitioners to face these threats and seize those opportunities which present themselves.

This programme integrates the study and understanding of the historic environment with the management tools essential for its preservation and stewardship, developing:

- Leadership and management skills,
- Business, enterprise and entrepreneurial skills,
- Knowledge and understanding of heritage and its management,
- Reflective practice and a commitment to continuing professional development.

The course is very flexible and may be taken full-time in one year, or part-time over two to four years. It is well suited to both early carer professionals looking to improve their skills or those wishing to change career.

The programme is taught by academics with backgrounds in business, management, archaeology and history, with extensive input from practicing heritage professionals and from our network of nationally recognised visiting fellows and professors.

MA/PgD/PgC

Duration

One year full-time

Two to four years part-time

Apply online

uos.ac.uk/apply

Entry requirements

Hold a Bachelors (Honours) degree or other equivalent qualification; or

Be currently working the field of heritage management and can demonstrate through professional or vocational achievement an academic standard equivalent to a Bachelors.

Human Resource Management

The Postgraduate Diploma in Human Resource Management is the key qualification for anyone who is either currently working as a HR professional, or who wishes to pursue a career in this increasingly important management function.

Many employers place great value in the advanced knowledge and skills developed from a postgraduate course, and much of the content covered will be of great benefit to professionals in other functions who are, or will be, responsible for managing people.

The course is delivered and assessed to Chartered Institute of Personnel and Development (CIPD) standards, and it can therefore lead to progression to Chartered CIPD membership, recognised globally as an important indicator of HR competence, and fundamental in the UK for anyone seeking to progress within the HR function.

The key aims of the course are:

- To develop the capacity to critically evaluate and apply appropriate HR practices and procedures into a variety of work-based settings,
- To develop analytical, strategic and business skills,
- To enhance professional and personal development,
- To develop a range of transferable management skills.

Most students who undertake this course are working in HR or a related field, and the teaching sessions focus in part on sharing the knowledge and experience within each student group. All students on the programme undertake a two day residential workshop at an outdoor Leadership / Development Centre in North Norfolk, which focuses on developing skills relating to Personal Development, Leadership, Team Working, Motivation and Communication.

PgD

Duration

Two years part-time

Apply online

uos.ac.uk/apply

Entry requirements

Hold a Bachelors (Honours) degree (or equivalent) at 2:2 or above; or

Three years' experience at managerial or professional level.

Students completing this programme will be eligible to apply for Corporate Membership of the CIPD. This is increasingly essential for anyone seeking to progress a career in HRM. Past graduates have achieved promotion as a result, and many now occupy HR Manager positions locally, nationally and internationally, and a significant proportion have used the qualification to launch their own HR Consultancy Businesses.

Human Resource Management

There is an increasing requirement for HR professionals to be able to demonstrate that their practices are embedded in the organisational strategy, and that they are fully geared towards achieving better business performance.

This course is designed to provide students with the opportunity to progress from existing postgraduate qualifications, in particular the Postgraduate Diploma in HRM, in order to achieve a Masters qualification. Students will undertake a taught module in Research Methods, and then a dissertation.

The dissertation must relate to a strategic human resources issue, and in most cases will involve research undertaken in the student's own organisation. This will provide the opportunity for students to undertake in-depth research into an issue which is of genuine interest to themselves in their professional development, and which will also be of benefit to their employer.

Graduates of the MSc Human Resource Management are able to demonstrate to employers that they can research and resolve organisational issues at a strategic level, which sets them apart from the competition in the increasingly competitive HR careers market. There is the possibility of progression to roles such as HR Manager or Director. Previous graduates have progressed to senior level positions in a wide range of organisations across the UK and beyond.

MSc

Duration

Approximately 15 months part-time

Apply online

uos.ac.uk/apply

Entry requirements

A postgraduate qualification in either Human Resource Management or a Business or Management specialism.

This programme aims to develop the analytical and strategic skills of students, in order to provide them with the ability to respond to the challenges of the global business environment with strategically focused solutions.

Professional Graduate Certificate In Education / Certificate In Education

The Professional Graduate Certificate in Education (PGCE) at Level 6 and Certificate in Education (CertEd) at Level 5 are professional qualifications for people teaching in further education colleges, sixth forms, adult education, higher education, and a wide range of other education and training settings.

Both courses are available to graduates and to non-graduates with appropriate vocational qualifications. They can be studied full-time or part-time. The one year full-time course is aimed at those new to teaching. The two year part-time course is aimed at teachers and trainers who are already in full or part-time employment.

The course is designed to encourage students to achieve their aims by engaging in activities which are directly related to their own teaching context. Students are assessed through a mixture of essays, reports, assignments and practical tasks as appropriate for the learning outcomes of each individual module. It is a requirement that all students pass the practical teaching elements of the course. Participants will be observed teaching in their normal teaching context and formally assessed a number of times throughout the programme.

These are professional qualifications for teaching in a post-compulsory education environment, providing the appropriate skills and knowledge required to meet the needs of learners. Those not currently in employment will be well placed to pursue teaching roles.

PGCE / CertEd

Duration

One year full-time
Two years part-time

Location

University of Suffolk
at West Suffolk College

University of Suffolk
at Suffolk New College

Apply online

uos.ac.uk/apply

Entry requirements

PGCE:

Hold a Bachelors (Honours) degree or equivalent qualification.

Have GCSE Maths and English at grade C or above, or equivalent.

CertEd:

Hold a BTEC Extended Diploma; or

Hold a HNC or HND; or

Hold a full City and Guilds Technological Certificate; or Hold a Royal Society of Arts Advanced Award; or

G/NVQ III/IV Award; or

Other professional qualification equivalent to Level 3; or

Other qualifications of equivalent standards to those listed above; and

Have GCSE Maths and English at grade C or above, or equivalent.

North Essex Primary SCITT

North Essex Secondary SCITT

Suffolk and Norfolk Primary SCITT

Suffolk and Norfolk
Secondary SCITT

Billericay Primary SCITT

Billericay Secondary SCITT

Inspiration Trust Primary SCITT

Inspiration Trust Secondary SCITT

These Level 7 courses offer a range of different opportunities to undertake teacher training in schools as part of a SCITT (a School Centred Initial Teacher Training programme), including the opportunity to work full-time. All programmes are salaried and are available at both primary and secondary level.

The major aim of the courses is to prepare trainee teachers effectively as specialists in their chosen subject(s) and to produce teachers who are confident and competent in the craft of teaching, as well as being active in the school environment. They bring together the very best of academic training to produce Newly Qualified Teachers who consider and reflect upon the purposes of education, as well as having high levels of knowledge, understanding and skills in the learning and teaching of children.

98% of trainees in 2016 were appointed to teaching posts in schools across the region as Newly Qualified Teachers (NQTs).

PGCE

Duration

One year full-time
Part-time courses are available for some Secondary subjects (Suffolk and Norfolk Secondary SCITT only)

Apply online

ucas.com

Entry requirements

Candidates must hold a first degree (normally a 2:2 or above, Honours degree) prior to starting the course.

Have GCSE Maths, English (and Science for Primary teaching) at grade C or above/grade 4 or above.

Applications are subject to satisfactory enhanced Disclosure and Barring Service check (previously the Criminal Records Bureau check).

Professional Skills Test

Regenerative Medicine

Regenerative Medicine encompasses many areas of life sciences and medicine. Twenty-first century medicine promises to address several unmet clinical needs and reduce healthcare costs.

It aims to repair damaged, diseased and worn out tissues or organs by using cells as therapies, delivered often in combination with bio-scaffolds, or using molecules that stimulate innate capacities of tissue repair.

Regenerative Medicine requires an understanding of many aspects: basic research, *in vitro* analysis, preclinical testing, product conceptualisation/development, consideration of regulatory and ethical frameworks, and navigation of intellectual property issues. The course will explore these complex areas together with providing an understanding of the continuously arising fundamental biological questions in the field, propelling science advancement with the development of solutions translated ‘from the bench to the bedside’.

A multidisciplinary approach is utilised to help graduates achieve critical knowledge and training in the biological and chemical basis of tissue regeneration, stem cell biology, and health-related biotechnologies. In addition, graduates benefit from state-of-the-art laboratory facilities: our Biotechnology Unit Laboratory was one of five international finalists for the REgMedNet Award for Cultivating Excellence (ACE) 2018. Students will be presented with inspirational research-infused teaching, from an expert Lecturing Team, supported by a wide network of national and international collaborators from the academic, industry and regulatory sectors. Our course offers exciting multidisciplinary interactions and strong employment opportunities for these trained in the field.

The aim of this course is to produce postgraduates capable of making an impact within the Regenerative Medicine sector. Thanks to a developed set of transferable skills, our graduates are able to secure jobs not only in academic or industrial research, but also in the areas of legal science, healthcare management, scientific writing and policy-making, as well as being well placed to proceed onto higher studies.

MSc

Duration

One year full-time

Two years part-time

Apply online

uos.ac.uk/apply

Entry requirements

Hold a Bachelors (Honours) degree with a 2:1 or above (or an equivalent study award) in an appropriate science/ bioscience or health related subject.

Those with an interest in the course possessing a non-bioscience based degree are advised to contact the Course Leader for guidance, prior to making an application.

STUDENT
PROFILEJamie
Ballisat**MSc Regenerative Medicine Student**

The level of independence required from sixth form to university can be a big step up, especially if you are studying in an area that you are less confident in. However, my lecturers were very supportive and delivered lectures in a relaxed style that enabled us to feel comfortable in the university environment. If needed, they were always available for further support and guidance outside of lectures. This was a big factor in so many people on my course succeeding.

I am studying the postgraduate course MSc Regenerative Medicine and I am constantly learning that all the same great opportunities are provided at postgraduate level too. The lecturers have provided me with the skills to progress beyond what I ever thought was possible in such a short time after completing undergraduate study. All of my lecturers are extremely encouraging and give students extra attention, teaching them to an outstanding level, both academically and practically.

I thought that studying a Masters degree would be extremely difficult, especially as I didn't have the level of background knowledge that my peers had at the beginning of the year. However, despite it being challenging, it is very much possible.

Now I am collaborating with one of my fellow students and working with our supervising lecturer to conduct valuable experiments that will be presented at an international conference. The opportunity to participate in such an event is something I never thought I would get during my time at university.

If you have doubts about which university you should apply for, I highly recommend studying at the University of Suffolk, especially within the Science department.

National Award Special Educational Needs Coordinator (SENCO)

This Postgraduate Certificate National Award has been designed to develop the skills, knowledge and understanding required to be an effective Special Educational Needs Coordinator (SENCO).

The course enables students to study and research current and relevant issues concerning a range of special educational needs and/or disabilities (SEND) and to develop a rich, broad-based knowledge of inclusive pedagogy and practice. Drawing on current legislation and national and international research, together we will examine issues of inclusion and explore the importance of strong leadership within SEND.

The course meets the learning outcomes for the National SENCO Award (NCTL, 2015), enabling qualified teachers to develop their expertise and knowledge in the area of special educational needs and disabilities while fulfilling Department of Education requirements for the role of SENCO. It will help you further develop your practice as a committed, responsible and creative professional, capable of critical thinking and practical action and support you in enhancing whole-school provision for pupils who have Special Educational Needs and/or disabilities. This qualification is central to career progression for all serving SEN Coordinators in schools.

This award has been described by the Department for Education as 'mandatory' for new SENCOs and a 'strongly advised' qualification for experienced SENCOs working in the mainstream sector.

PgC

Duration

One year part-time
Also available part-time

Apply online

uos.ac.uk/apply

Entry requirements

Hold a Bachelors (Honours) degree in a relevant subject at 2:2 or above, or equivalent.

Currently working as a qualified teacher and supporting teaching and learning in a relevant setting with direct responsibility for learning.

BUSINESS ENGAGEMENT AND PROFESSIONAL STUDIES

The University is an active member of the business community in Suffolk and the East of England. We value the expertise that our business partners bring to the development and expansion of our new and existing courses.

We work closely with businesses to support our students and graduates in accessing internships, placements and graduate positions. We welcome businesses to interact with the whole University community through the Ipswich Waterfront Innovation Centre (IWIC), and our Business and Enterprise Development Programme. Our academic staff collaborates with business through research and enterprise, knowledge transfer, and Continued Professional Development (CPD).

The University runs a range of events specifically for businesses including Business Breakfasts and sector-specific Conferences, and we work with businesses to provide professional development opportunities for their staff, including short courses and professional undergraduate and postgraduate programmes. The School of Health Sciences has worked in partnership with commissioners and employers in the development of Health-specific CPD and postgraduate programmes such as the Postgraduate Diploma in Specialist Community Public Health Nursing, Postgraduate Diploma in Primary Care Nursing (General Practice / District Nursing), and Masters programmes in Primary Care Nursing and Public Health Nursing.

The School of Psychology and Education has also developed CPD provision related to teaching, including a selection of Subject Knowledge Enhancement short courses. It is also possible to undertake individual credit modules from some of our Masters programmes, which can contribute towards a full Masters or a PgD/PgC.

Visit uos.ac.uk/businessengagement





APPRENTICESHIPS

The University recently became a provider of Apprenticeships, offering a range of Higher and Degree Apprenticeships.

Our Degree Apprenticeships at Level 6 provide the opportunity to gain a full Bachelors degree, and at Level 7, a Masters degree. For students considering postgraduate study, a Degree Apprenticeship at Level 7 is an excellent progression route. An example of this is our new Level 7 Management Apprenticeship that sits within the Suffolk Business School.

Studying as an Apprentice

Apprentices are employed as a member of staff within their organisation, with all of the associated employment rights and benefits, but are also full-time students. Apprentices have access to all of the facilities they require at the University to successfully complete their apprenticeship,

and will undertake projects and assignments that are relevant to their job role, organisation and sector. Our Apprenticeship students are usually in groups with apprentices from a range of industries and organisations, providing excellent networking opportunities.

Visit uos.ac.uk/apprenticeships

Level 7 Management Apprenticeship:

The University of Suffolk is offering a new Masters Degree Apprenticeship in Senior Leadership. This Level 7 Apprenticeship is aimed at professional strategic leaders working in private, public or third sector and in all sizes of organisations.

Drawing on the University's history in offering the Masters in Business Administration (MBA) and Masters in Business and Management, the Level 7 Degree Apprenticeship will provide senior managers with the academic study to develop their strategic leadership skills.

The Apprenticeship will typically last 24-30 months (depending on experience) and will cover areas including Strategy, Innovation and Change, Enterprise and Risk, Finance, Leadership and Management.



HOW TO APPLY



We welcome applications from all prospective students who can demonstrate they have the potential academic skills or experience to successfully complete the course. The majority of postgraduate degrees are available on both a full-time and part-time basis, with students able to choose the best method of study for them.



Students wishing to study full or part-time postgraduate, professional or CPD courses starting in September or February should apply directly via the online application form on our website.

Students considering applying for postgraduate study are encouraged to attend an Open Event. This is a good opportunity to meet representatives from the academic team and find out more about what the course entails.

Open Events also often include campus and accommodation tours, enabling students to view academic and social facilities. Dates can be found on page 61 of this prospectus, as well as on our website.

For more information on how to apply or for further assistance with your application, please contact the Infozone on 01473 338833 or email infozone@uos.ac.uk

FINANCING YOUR STUDY

Choosing to study a postgraduate qualification can be a big financial commitment but help is available to support your study.

Tuition fees

Tuition fees for 2019/20 are:

Masters programmes
(excluding the MBA) £7,830
full-time

Master of Business
Administration (MBA)
£14,220 full-time (including
USA trip)

Postgraduate Certificate
programmes (PgC)
£2,610 full-time

Postgraduate/Professional
Graduate Certificate in
Education (PGCE) £6,525
full-time

Postgraduate Diploma
programmes (PgD)
£5,220 full-time

For more information
and the full list of tuition
fees, including fees for
international students, visit
uos.ac.uk/finance



Professional and career development loan

Some banks offer loans to pay for courses and training that help with your career or help get you into work. You may be able to borrow between £300 and £10,000.

Loans are usually offered at a reduced interest rate and the government pays the interest while you are studying.

For full conditions and how to apply visit [gov.uk/career-development-loans](https://www.gov.uk/career-development-loans)

Part-time work

Almost half of all postgraduate students nationally study part-time. This enables students to work and fund their studies at the same time as studying on a postgraduate course.

Institutional or charity funding

There are funding bodies to which applications for funding can be made. The amount of funding available and the terms and conditions vary.

For example Postgrad Solutions Ltd offer limited bursaries of £500, visit [postgrad.com](https://www.postgrad.com)

Students facing financial difficulty can apply to the Financial Support Fund (FSF). The FSF is administered by the University based on guidance from the National Association of Student Money Advisors. Applications are means-tested and assume the student has already made the minimum required financial provision for their time as a postgraduate.

Employers

If you are currently working you may be eligible for help with your fees through CPD (Continuing Professional Development) or other forms of staff development. It would be worth discussing the options available with your employer.

Alumni Postgraduate Loyalty Scheme

The University of Suffolk Alumni Postgraduate Loyalty Scheme has been developed to support and encourage alumni to progress to full or part-time postgraduate taught or research programmes at the University. For those who successfully secure a place on an eligible postgraduate course†, and complete the relevant application form, the following reductions will be applied to course fees:

20% reduction for University of Suffolk and UCS graduates (those who have completed an undergraduate degree after 2007).

10% reduction for members of the Alumni Association who completed an undergraduate degree prior to 2007 at one of our legacy institutions in Suffolk.

A further 5% reduction will be applied for those alumni who apply for a place on a postgraduate programme before specified dates, as published in the terms and conditions† for the scheme.

For further details and to complete the relevant application form, visit www.uos.ac.uk/alumni

Postgraduate Master loans

Postgraduate loans are available to help with the tuition fees and/or living costs for some courses at a postgraduate level of study. Loans can be used to pay your tuition fees or to help support yourself while you study. You can apply for the full amount regardless of the actual tuition fee that you will be paying. For the set eligibility criteria and further information please visit www.gov.uk/funding-for-postgraduate-study

Visit [uos.ac.uk/finance](https://www.uos.ac.uk/finance) or [gov.uk/student-finance](https://www.gov.uk/student-finance)

† Terms and Conditions apply – see website for further details [uos.ac.uk/alumni](https://www.uos.ac.uk/alumni)



INFOZONE

We are here to make life as simple as possible for everyone, whether potential applicants or current students at the University of Suffolk.

Our knowledgeable Infozone team provide a friendly and efficient service, and will be able to respond on-the-spot to the majority of enquiries. We can also help you access many of the specialist services available, including booking one-to-one appointments with support staff.

You can contact the team in person by visiting the Infozone on the ground floor of the Waterfront Building at the Ipswich campus, by telephone on **01473 338833**, or email **infozone@uos.ac.uk**

The Infozone is a one-stop-shop giving advice and information on all aspects of student life. Whether you need information on applying for study, accommodation, or finance, you can find all the answers through the Infozone.

Ask us a question at: uos.ac.uk/infozone

OPENEVENTS

Open Events are a great opportunity to find out more about the courses available at the University of Suffolk, and to view the academic and social facilities.

All Open Events have academics available for one-to-one discussion, and some of the events will also include talks about specific subjects and support.

Saturday 3 November 2018

10.30am - 2.30pm

Monday 3 December 2018

4.00pm - 7.00pm

Saturday 27 April 2019

10.30am - 2.30pm

Saturday 6 July 2019

10.30am - 2.30pm

Visit uos.ac.uk/openevents

INDEX

Index

Academic schools	22
Accommodation	21
Apprenticeships	54
Business engagement and professional studies	52
Courses	32
Destination Suffolk	4
Enterprise and innovation	14
Facilities and resources	16
Financing your study	58
Graduate school	26
How to apply	56
Index	62
Infozone	60
Learning services	17
Open events	61
Our location	6
PhD study	28
Research	12
Student life	20
Student services	18
Studying at Suffolk	29
The Suffolk learning experience	11
Why chose postgraduate study	8

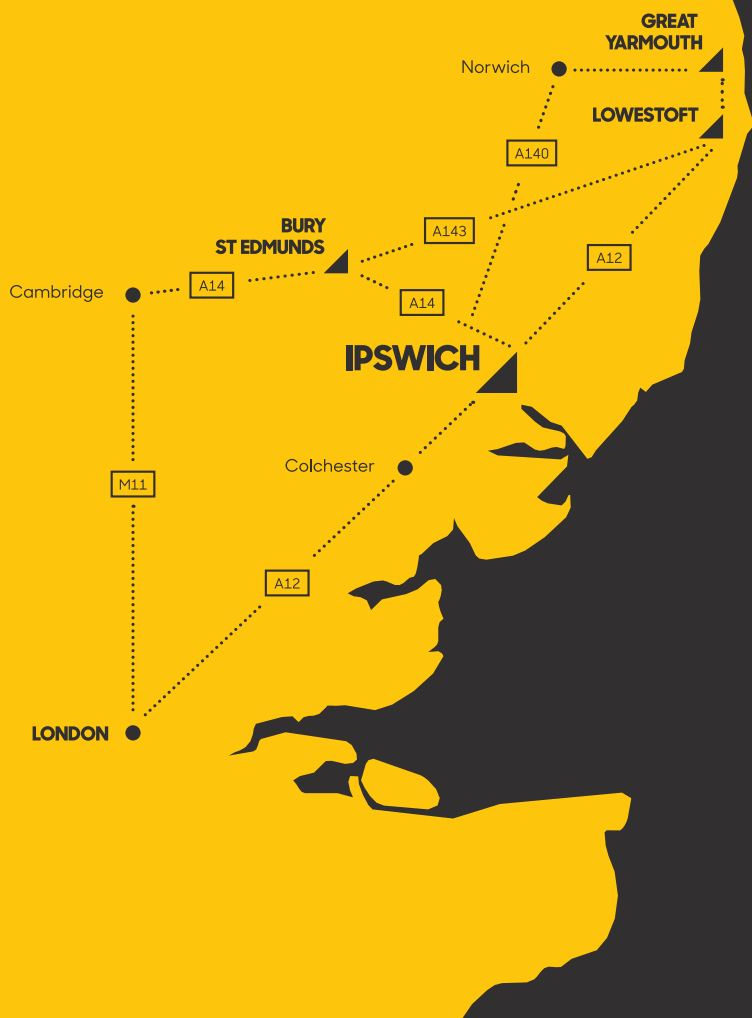
Course Index

Advanced Healthcare Practice	33
Applications of Psychology	34
Business Administration, Master of	36
Business and Management	37
Certificate in Education (CertEd)	47
Childhood Studies	39
Crime and Community Safety: Evidence Based Practice	40
Education Studies	42
Games Development	43
Healthcare Practice, Advanced	33
Human Resource Management	45, 46
Management, Business and	37
Master of Business Administration	36
PGCEs	47
Professional Graduate Certificate in Education	47
Professional Practice in Heritage Management	44
Psychology, Applications of	34
Regenerative Medicine	49
School Centred Initial Teacher Training (SCITT)	48
Special Educational Needs Coordinator (SENCO)	51



Facebook Messenger

You can easily get in touch with us by scanning this code in Facebook Messenger. Simply go to the menu in Messenger, click on the 'Scan Messenger Code' button which will open up your phone's camera. Scan the code, then just type your message and send.



This publication is for general guidance and the University of Suffolk cannot guarantee the provision of all courses and services in the event of circumstances beyond its control. The University of Suffolk publishes detailed course documentation on each course webpage and full terms and conditions on our website at uos.ac.uk/studentpolicies

University of Suffolk Ltd is a limited company registered in England and Wales. Registration number 5078498. Registered office Waterfront Building, Neptune Quay, Ipswich IP4 1QJ. uos.ac.uk

IDA RE





